

The NHS as a Sacred Value

Linda Woodhead



Figure 12 Satisfaction with the NHC's Overall Analysis



Clap for carers





...ing situation, says

11.2%

...wood in a... session with

...day

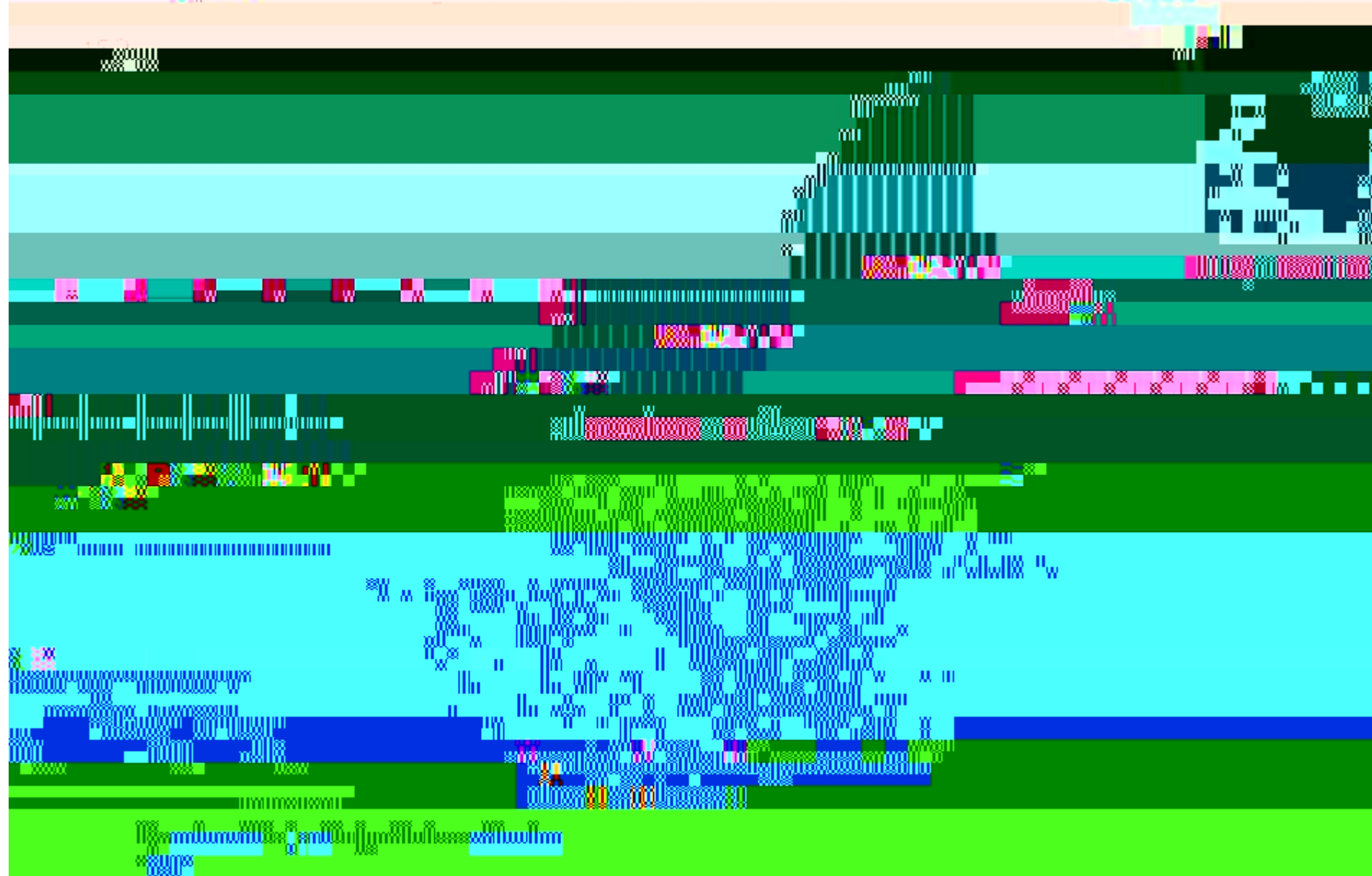
...day



as Dorothy Perkins

How the health budget has grown

Real-terms spending, 2010-19, prices 2010





STAY HOME

STAY HOME

PROTECT

THE NHS

SAVE LIVES



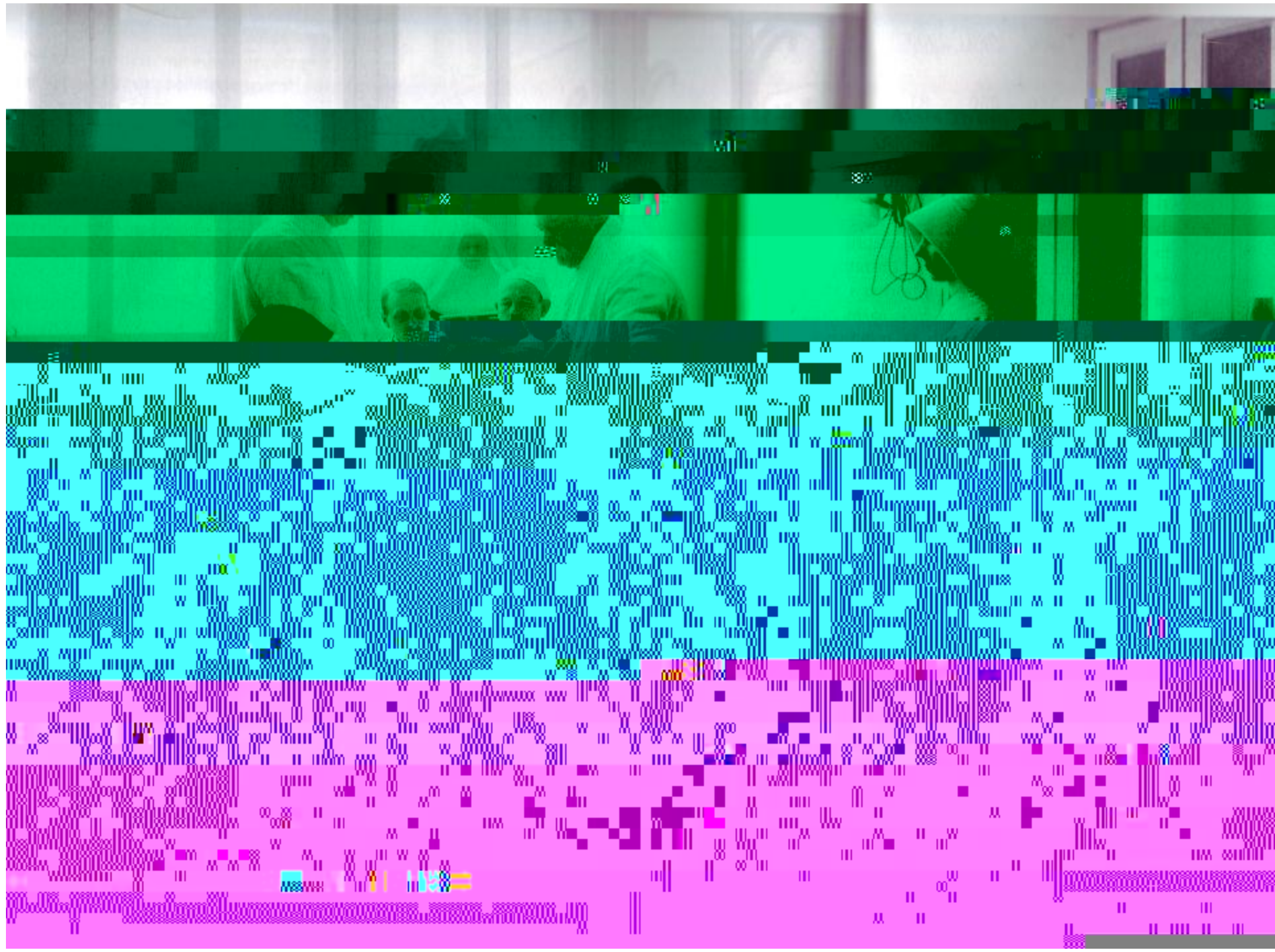
Max Weber

Instrumental rationality

&

Value rationality

My argument: the NHS is a symbol and repository of our most sacred values

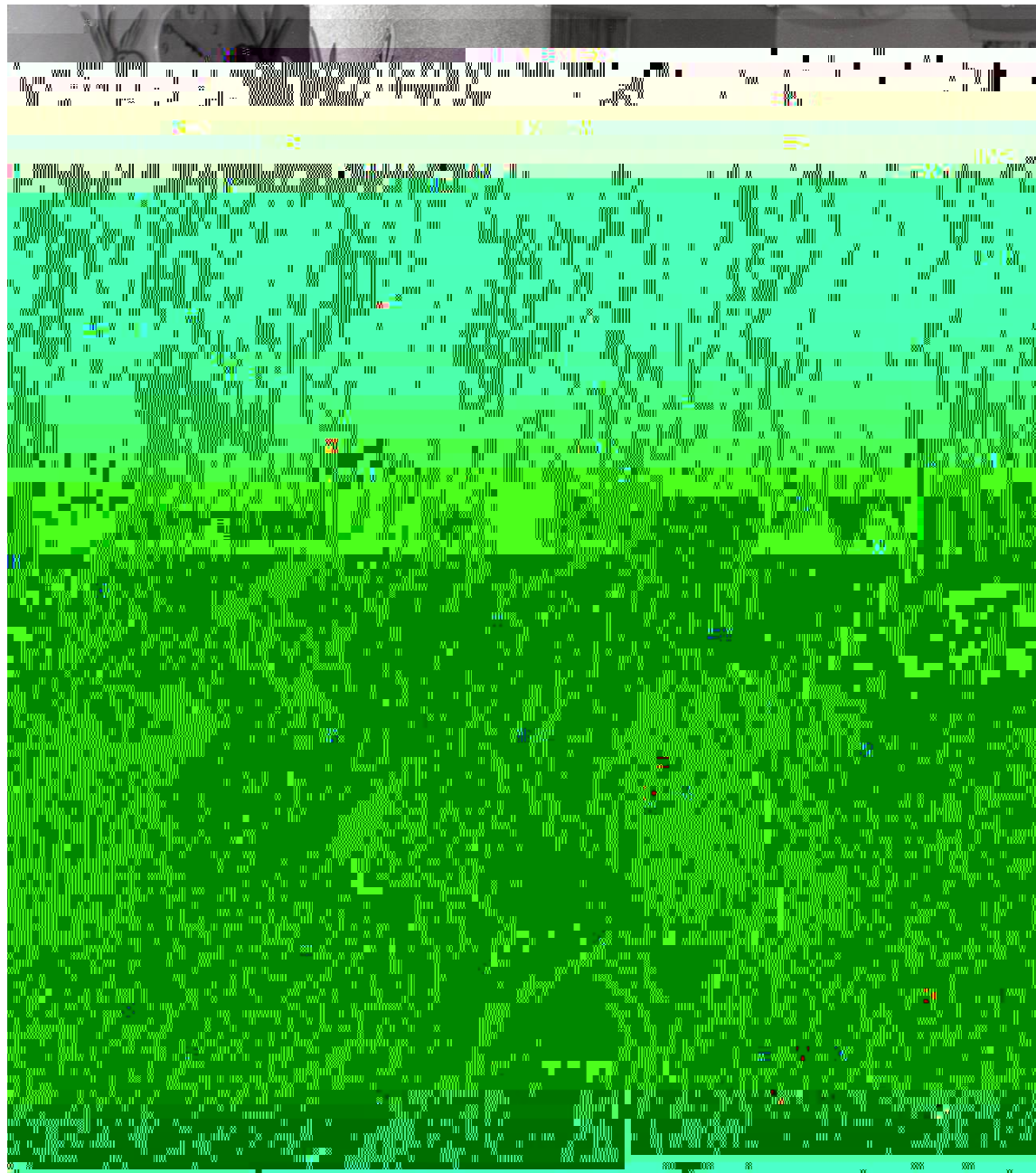


The Post-war Welfare Project

L'État-providence

Many of the architects of welfare state were Christian, including Prime Minister Harold MacMillan, Archbishop William Temple, William Beveridge, and Richard Tawney. Bishop J.W.C. Ward called the welfare state 'an expression at the national level of the humanitarian work of the Church.'



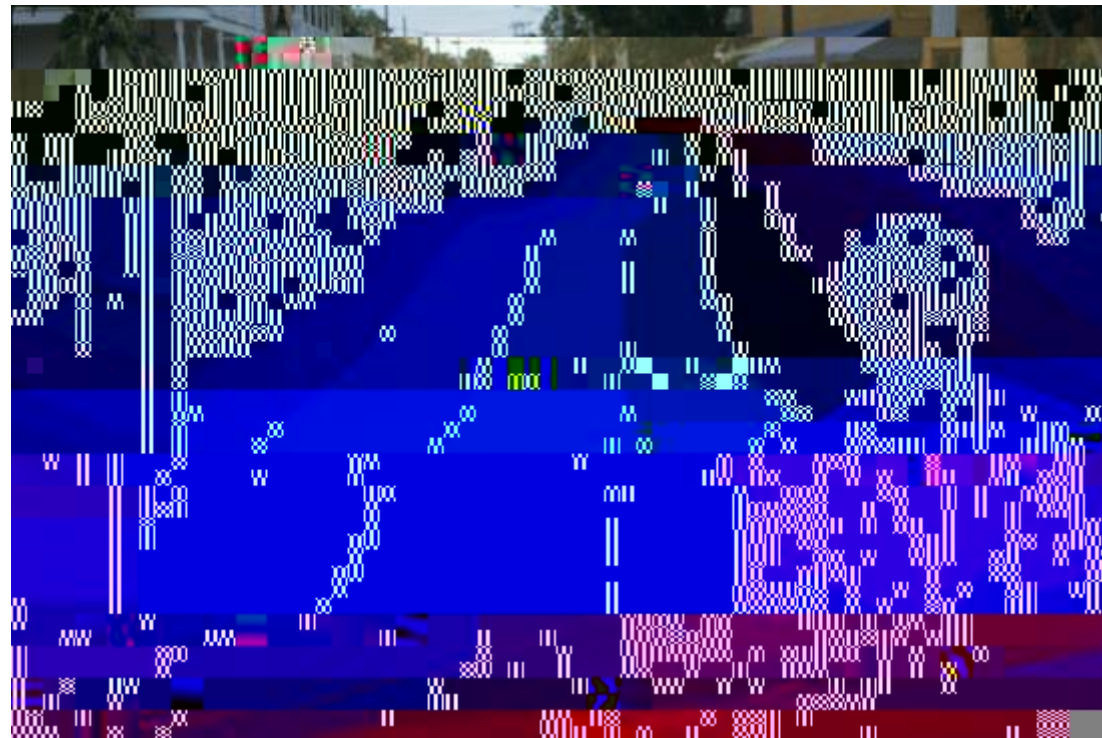


Richard Titmuss: blood donation as the modern eucharist

Richard Titmuss, *The Gift Relationship. From Human Blood to Social Policy*. New York, NY: Vintage Books, 1972.



1978, San Francisco





The NHS today symbolises

Equality

Diversity (caring respect for each unique individual)

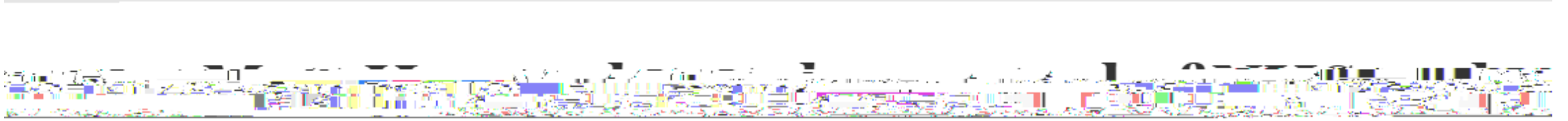
Care

National identity and pride

Enter the market

Entrepreneurial values:

Competition, innovation, efficiency, individual success



COMMISSION

MEMBERS: ...

... 5 February 2021 • 7:00pm

Political appropriation



Émile Durkheim

Society and the sacred:

Symbol and ritual

Collective consciousness

Holding up a better image of society

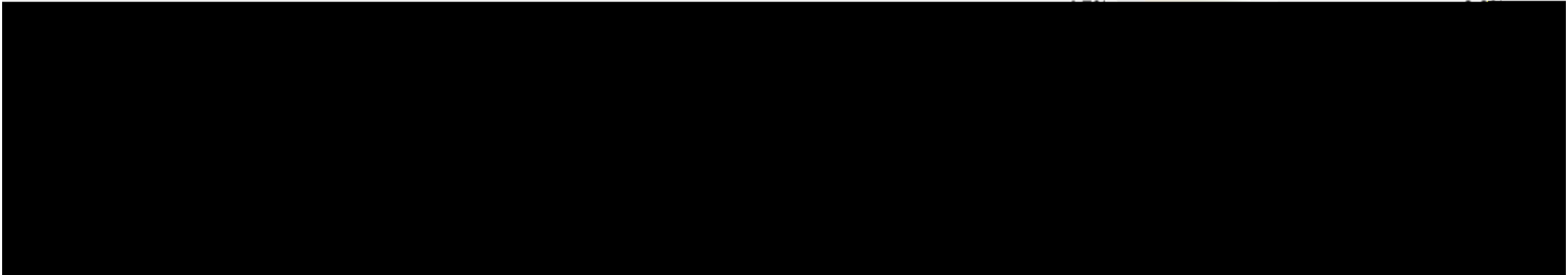
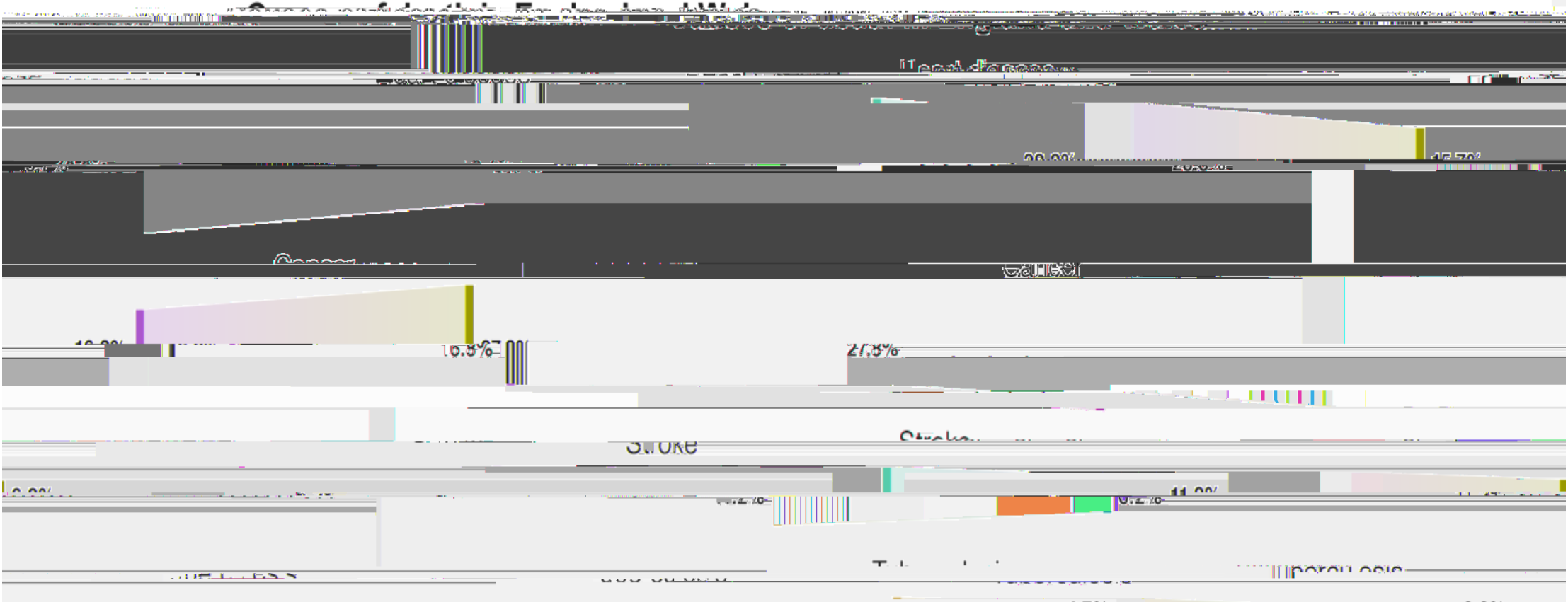
Dangers

Uncritical, 'turn a blind eye'

Political appropriation

The weight of idealisation

The NHS can't do all that religion can – e.g. death, suffering, injustice



However important the science, we are really dealing with a faith.